



Implemented by
giz Deutsche Gesellschaft
für Internationale
Zusammenarbeit (GIZ) GmbH

Agroecology Leadership Academy 2024

International Online Session, 12 September 2024

“Dealing with blockages & harvesting”

Académie de Leadership en Agroécologie 2024
Session internationale en ligne, 12 Septembre 2024

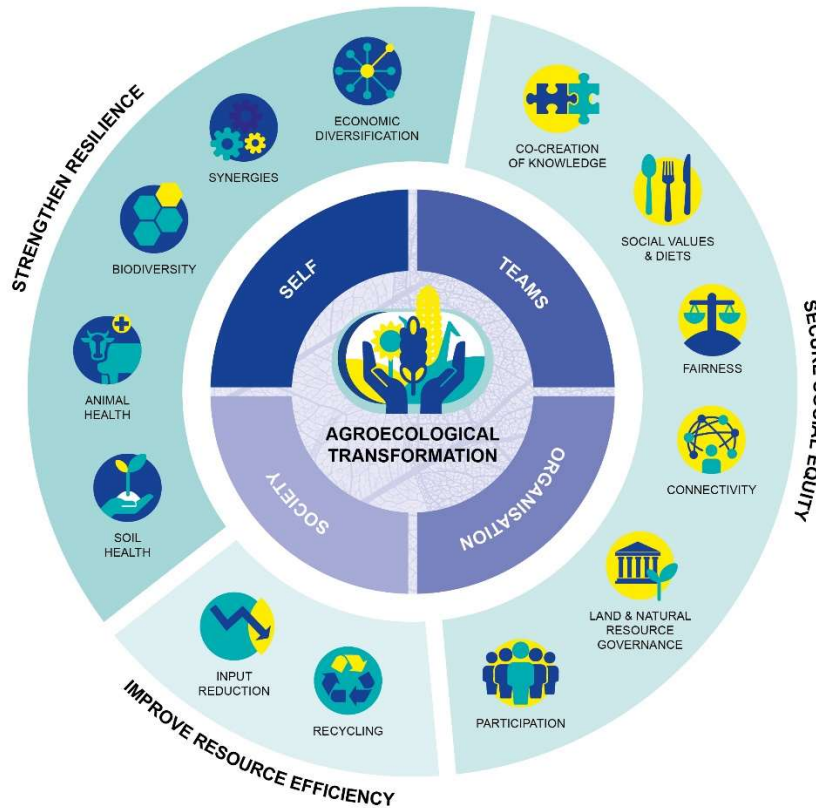
“Gérer les blocages et en récolter les fruits”



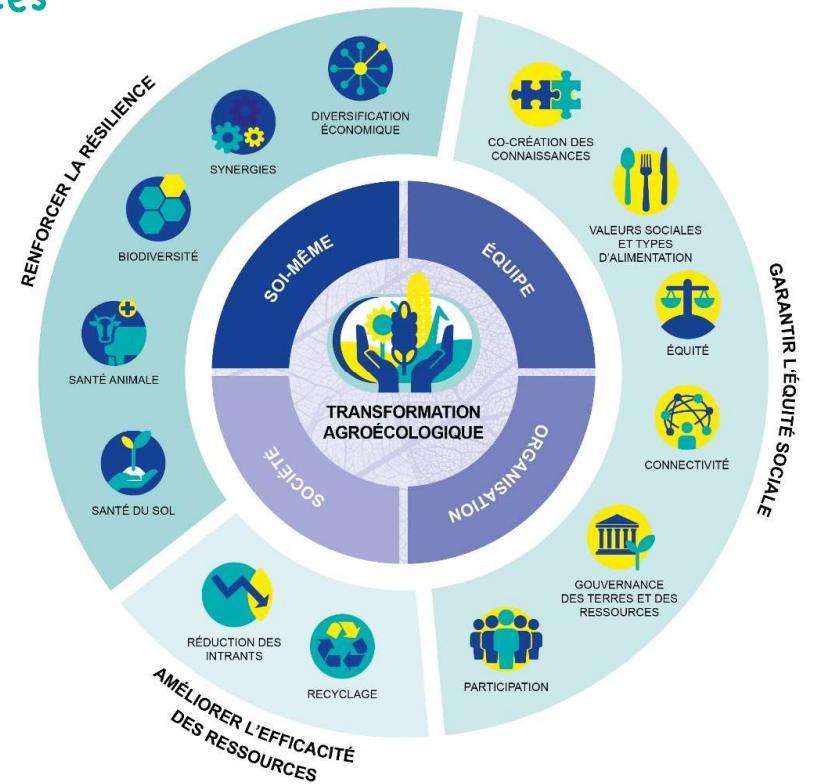


Dealing with obstacles and
blockages / Faire face aux obstacles et aux blocages

Challenges and obstacles can occur in all quadrants and fields



Les défis et les obstacles peuvent survenir dans tous les quadrants et dans tous les domaines





Agroecology TPP



Implemented by



Assessing Agroecological Transitions

An overview of tools and frameworks for the Agroecology Leadership Academy 4th online exchange

Évaluer les transitions agroécologiques

Une vue d'ensemble des outils et des cadres pour le quatrième échange en ligne de la Académie de Leadership en Agroécologie

12th September 2024



Matthias Geck

'Measuring Agroecology': What matters to you? | *Mesurer l'agroécologie : Qu'est-ce qui compte pour vous ?*

Please use the chat or raise your hand to let us know:

Why do you think 'measuring agroecology' is **important for overcoming critical barriers** to agroecological food system transformation?

Veillez utiliser le chat ou lever la main pour répondre à cette question :

Pourquoi pensez-vous que « mesurer l'agroécologie » est **important pour surmonter les obstacles majeurs** à la transformation agroécologique des systèmes alimentaires ?



Implemented by



Agroecology Transformative Partnership Platform

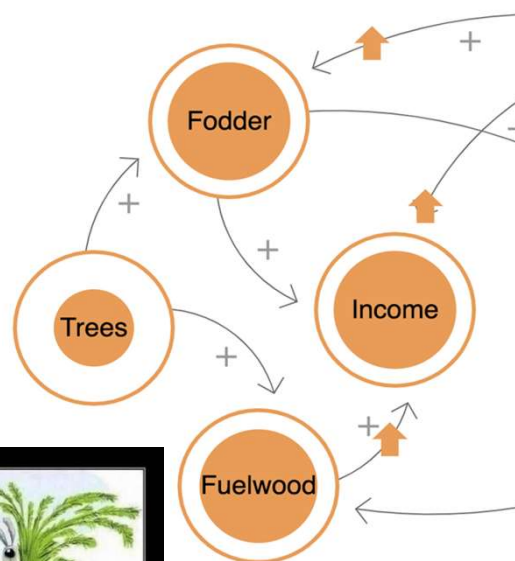
Levelling the playing field | *Uniformiser les règles du jeu*

A key challenge to up-scaling agroecology is providing policymakers, donors, development actors and farmers with ways of measuring performance that **allow fair comparison** with alternatives.

Agri-food systems are complex, measuring them isn't easy.

Dominant practice has been to **measure a narrow set of metrics** focusing on economic performance and productivity.

But agroecological systems provide environmental and social benefits, not only economic ones!

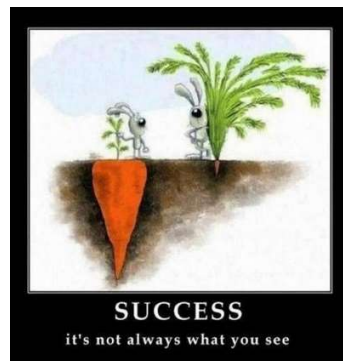


L'un des principaux défis de la généralisation de l'agroécologie est de fournir aux décideurs politiques, aux donateurs, aux acteurs du développement et aux agriculteurs, des moyens de mesurer les performances qui **permettent une comparaison équitable** avec d'autres solutions.

Les systèmes agroalimentaires sont complexes et il n'est pas facile de les mesurer.

La pratique dominante a consisté à **mesurer un ensemble restreint de paramètres axés** sur les performances économiques et la productivité.

Or, les systèmes agroécologiques offrent des avantages environnementaux et sociaux, et pas seulement économiques !



Agroecology TPP



german cooperation
DEUTSCHE ZUSAMMENARBEIT



Co-funded by
the European Union

Implemented by

giz Deutsche Gesellschaft für Internationale Zusammenarbeit (GIZ) GmbH



Stats4SD Investing in rural people



Agroecology Transformative Partnership Platform



The 'Metrics Domain' of the Agroecology TPP | Le 'Domaine Métriques' de la TPP Agroécologie



Holistic Performance Measurement for Food Systems Transformation
A scoping study in Burkina Faso, Ghana, and Tunisia

ICARDA
IDRC · CRDI
Canada

Matthias Geck & Mary Crossland



ANNUAL MEMBERS FORUM MEETING 2024

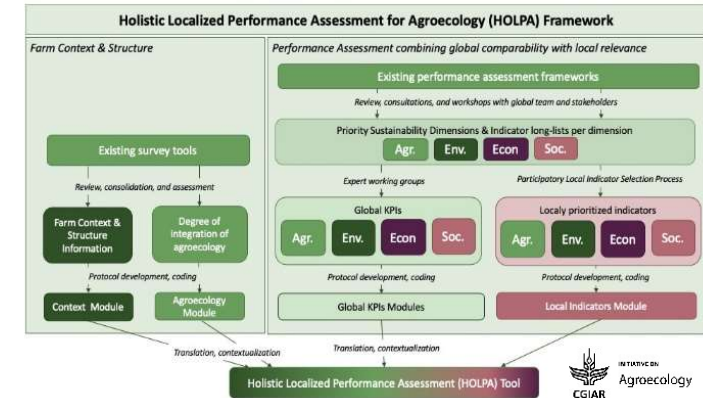
Metrics

Measuring what matters to support agroecological TRANSITIONS

12 March 2024

2024 · Annual Members Forum Meeting / Nairobi, Kenya

Matthias Geck




Measuring Agroecology and its Performance (MAP)
Introduction to the collaborative MAP project at the inception meeting in Nairobi

21 June 2023

Stats4SD
CIFOR
World Agroforestry
cirad
Food and Agriculture Organization of the United Nations
giz

Matthias Geck



Moeller, NI, et al. 2023. Measuring agroecology: Introducing a methodological framework and a community of practice approach. *Elem Sci Anth*, 11: 1. DOI: <https://doi.org/10.1525/elementa.2023.00042>

Outlook on Agriculture
Volume 52, Issue 3, September 2023, Pages 349-359
© The Author(s) 2023, Article Reuse Guidelines
<https://doi.org/10.1177/00307270231196309>

Sage Journals

Perspectives

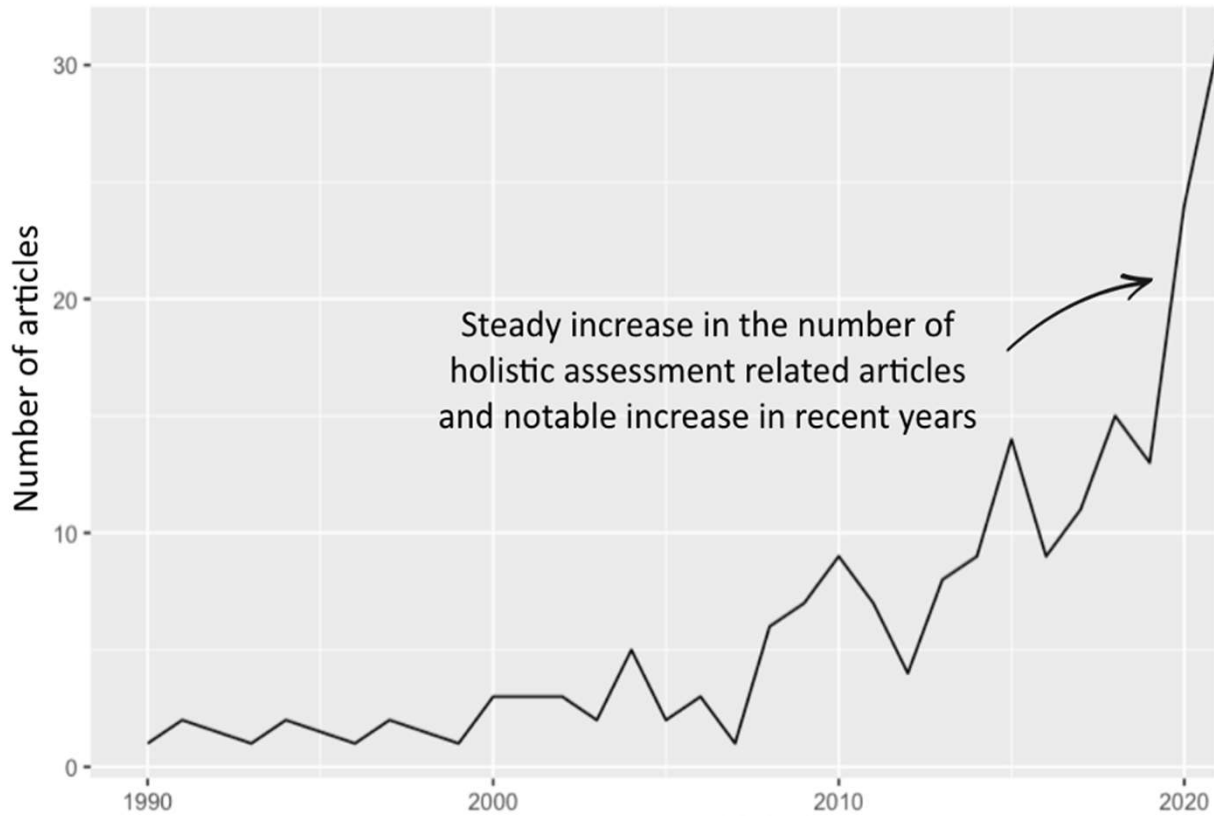
Measuring agroecology and its performance: An overview and critical discussion of existing tools and approaches



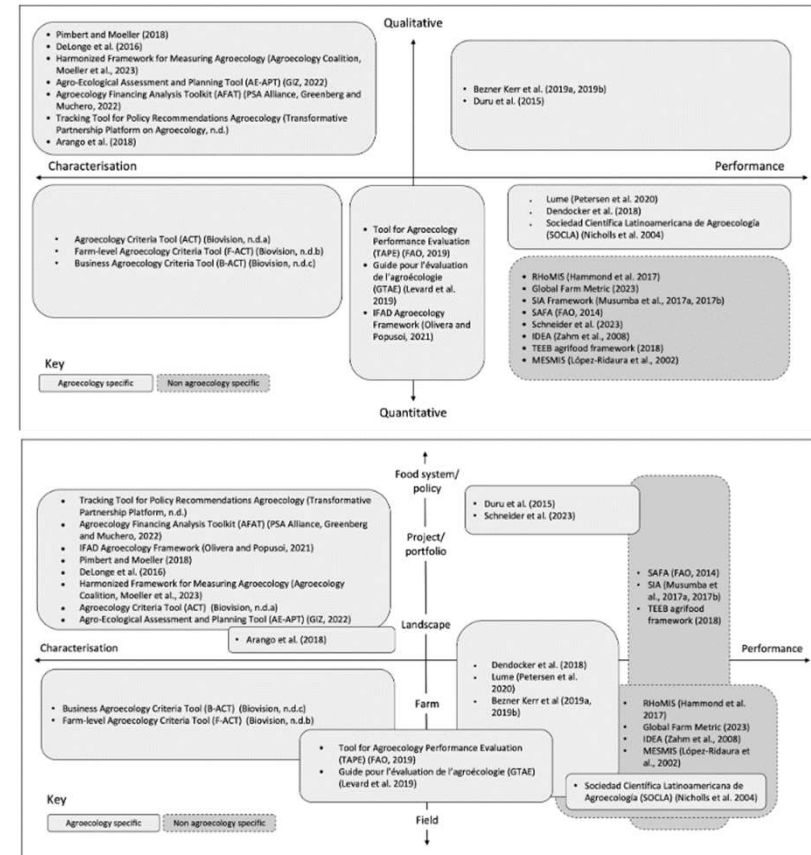
Agroecology Transformative Partnership Platform

No silver bullets: Diverse objectives and approaches

Pas de solution miracle : Des objectifs et des approches variés



Crossland et al. Forthcoming. *Food and Agricultural Systems Performance: a systematic literature review of holistic assessment approaches*. *Frontiers in Sustainable Food Systems*



Outlook on Agriculture
Volume 52, Issue 3, September 2023, Pages 349-359
© The Author(s) 2023, Article Reuse Guidelines
<https://doi.org/10.1111/00307270231196309>

Sage Journals

Perspectives

Measuring agroecology and its performance: An overview and critical discussion of existing tools and approaches

Agroecology Transformative Partnership Platform

What does 'Measuring Agroecology' mean? *Que signifie « mesurer l'agroécologie » ?*

Three general ways of looking at the topic:

1. Assessing the degree of agroecological **integration**: Status of integration of 13 principles or 10 elements
2. Assessing the **performance** of agroecology: Status of agroecology's contribution to achieving societal goals
3. Assessing agroecological **transitions**: Tracking of changes in a system and its components over time

Trois façons générales d'aborder le sujet :

1. évaluer le degré d'intégration agroécologique : état de **l'intégration** des 13 principes ou des 10 éléments
2. évaluer la **performance** de l'agroécologie : état de la contribution de l'agroécologie à la réalisation des objectifs sociétaux
3. l'évaluation des **transitions** agroécologiques : Suivi de l'évolution d'un système et de ses composantes au fil du temps



‘Measuring Agroecology’: What tools have you used | *Mesurer l'agroécologie* » : *Quels outils avez-vous utilisés ?*

Please use the chat or raise your hand to let us know:

Which relevant tools or frameworks have you previously used or engaged with and which of the three categories would you place these in?

1. Assessing the degree of agroecological **integration**
2. Assessing the **performance** of agroecology
3. Assessing agroecological **transitions**

Veuillez utiliser le chat ou lever la main pour nous dire:

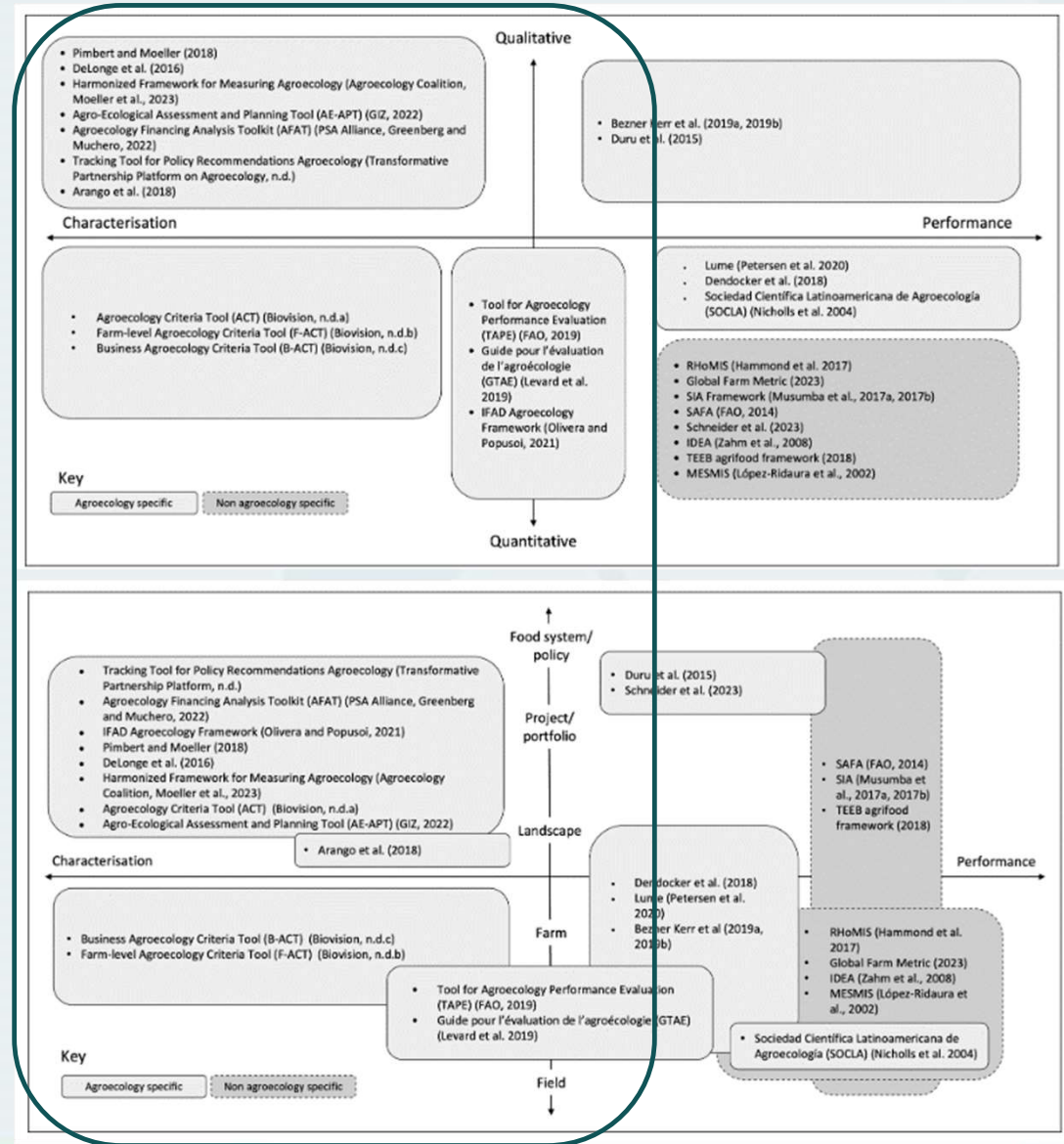
Quels sont les outils ou cadres pertinents que vous avez déjà utilisés ou avec lesquels vous vous êtes engagé et dans laquelle des trois catégories les classeriez-vous ?

1. évaluation du degré **d'intégration** agroécologique
2. évaluer les **performances** de l'agroécologie
3. évaluer les **transitions** agroécologiques



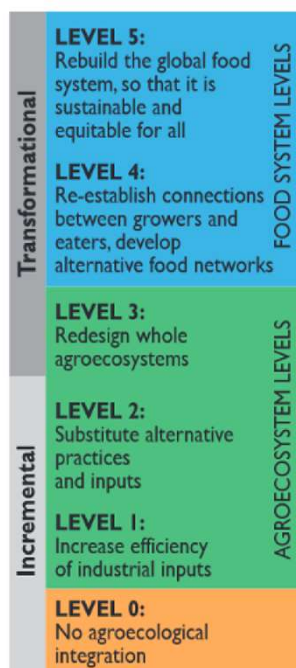
**Assessing the degree of agroecological integration:
Status of integration of 13 principles or 10
elements at different levels**

**Évaluation du degré d'intégration agroécologique :
État de l'intégration des 13 principes ou des 10
éléments à différents niveaux**



Assessing financial flows and investments | *Évaluation des flux financiers et des investissements*

5 Gliessman's levels

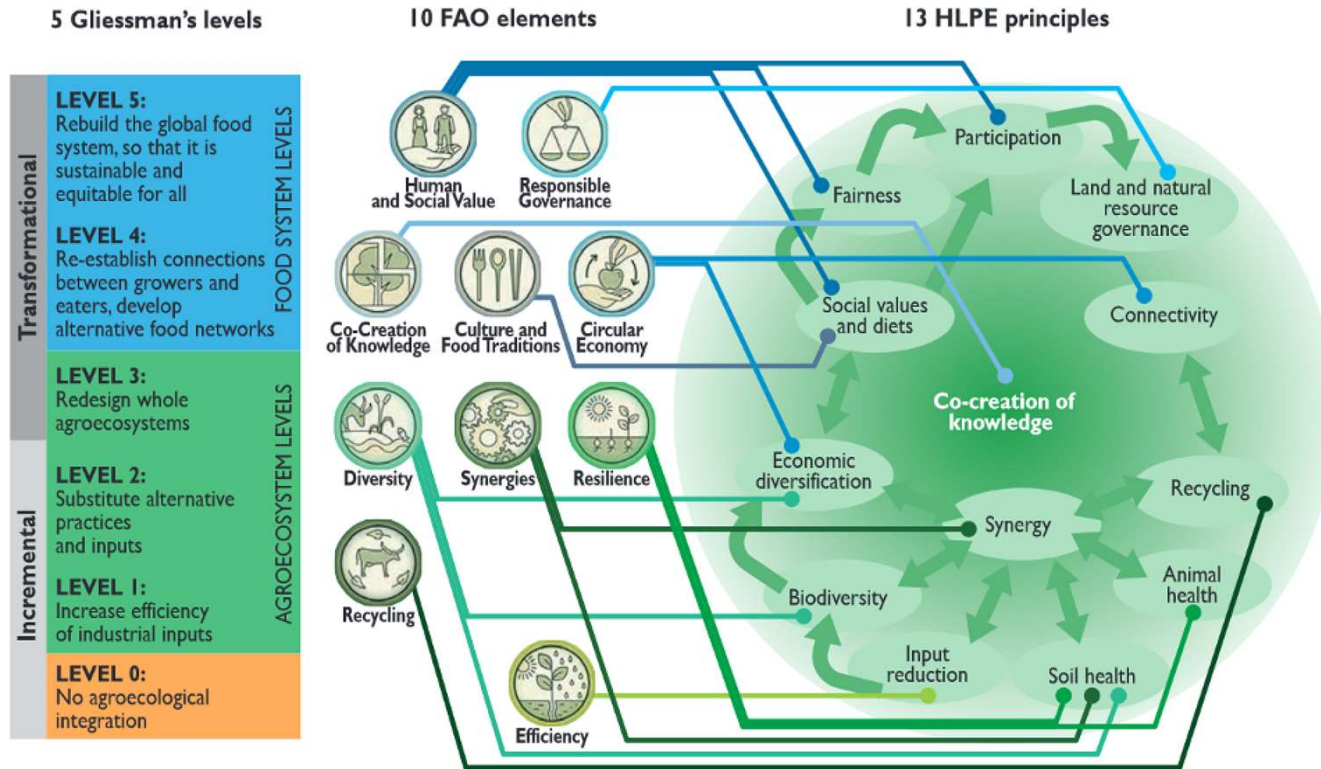


Gliessman S (2016) Transforming food systems with agroecology. *Agroecology and Sustainable Food Systems* 40(3)

DeLonge MS, Miles A and Carlisle L (2016) Investing in the transition to sustainable agriculture. *Environmental Science & Policy* 55(1): 266–273

Pimbert MP and Moeller NI (2018) Absent agroecology aid: On UK agricultural development assistance since 2010. *Sustainability* 10(2): 05.

10 elements and 13 principles change the game | 10 éléments et 13 principes changent la donne



FAO (2018) The 10 Elements of Agroecology: Guiding the Transition to Sustainable Food and Agricultural Systems. Rome: Food and Agricultural Organization of the United Nations.

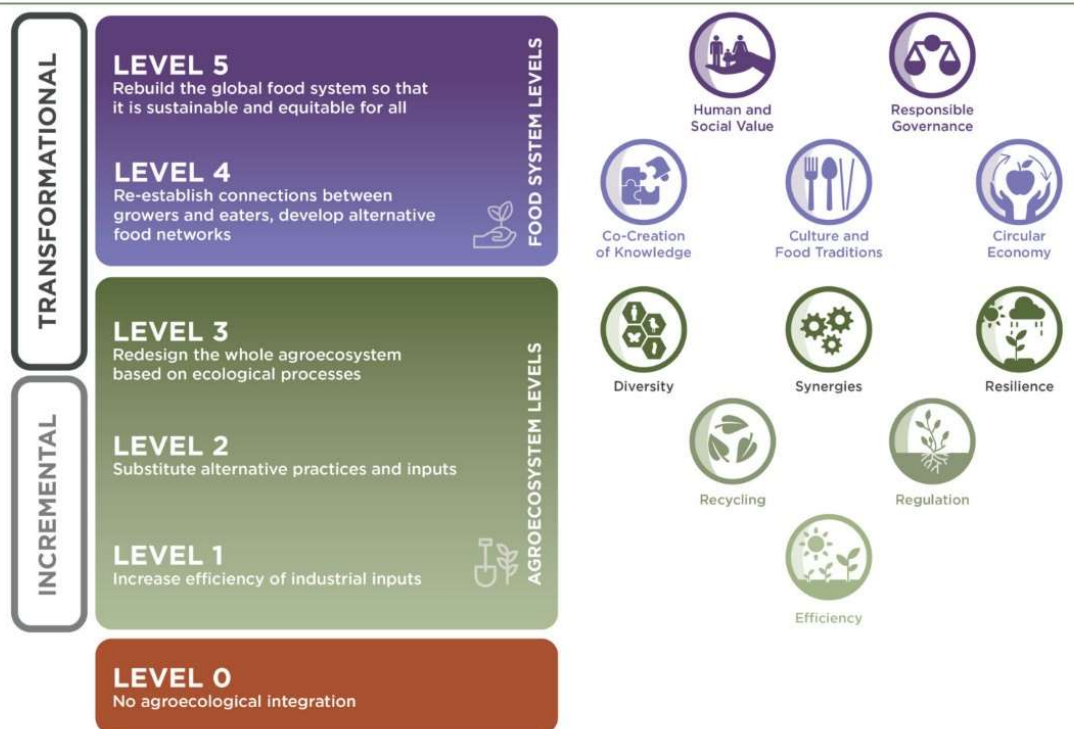
HLPE (2019) Agroecological and other innovative approaches for sustainable agriculture and food systems that enhance food security and nutrition. A report by the High Level Panel of Experts on Food Security and Nutrition of the Committee on World Food Security, Rome.

Wezel A, Herren BG, Kerr RB, et al. (2020) Agroecological principles and elements and their implications for transitioning to sustainable food systems. A review. *Agronomy for Sustainable Development* 40(6): 40.

▲ Linking FAO's 10 elements, Gliessman's 5 levels of food system transformation and the 13 HLPE principles

Assessing financial flows and investments | *Évaluation des flux financiers et des investissements*

5 LEVELS OF FOOD SYSTEM CHANGE AND 10+ ELEMENTS OF AGROECOLOGY



Biovision' Agroecology Criteria Tool (ACT): Great choice for assessing 'agroecologicalness' of projects and portfolios in an efficient but systematic manner

L'outil de critères agroécologiques de Biovision (ACT) : Un excellent choix pour évaluer l'agroécologie des projets et des portefeuilles d'une manière efficace et systématique.

<https://www.agroecology-pool.org/methodology-old/>



Implemented by

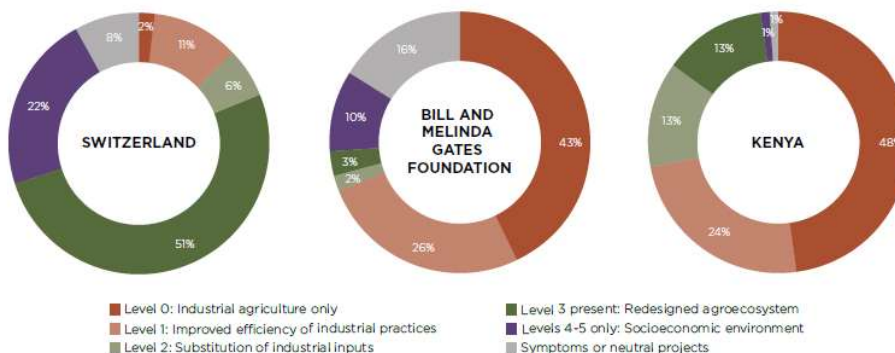


Agroecology Transformative Partnership Platform

Assessing financial flows and investments | Évaluation des flux financiers et des investissements



Overview of the degree to which agroecology has been integrated in AgR4D projects in three case studies



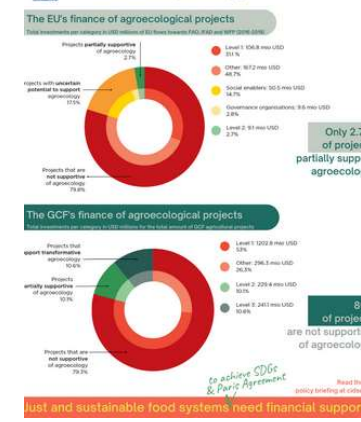
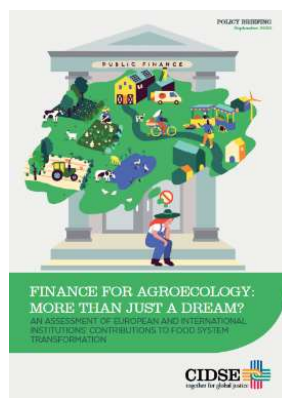
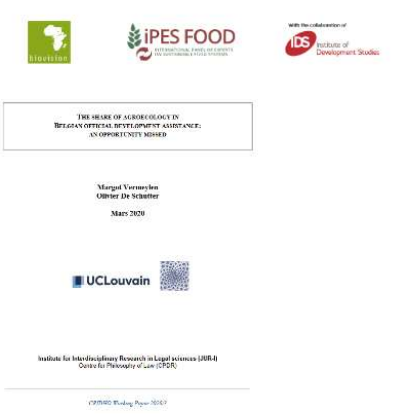
Finance for agroecology: more than just a dream?
Read the full policy briefing at cdise.org

agroecology

Agroecology is a way of redesigning and managing food systems, from the farm to the table, with a goal of achieving ecological, economic, and social sustainability by applying a series of principles. There are 5 levels of transition towards this sustainable food system.

- Level 1: Increase the efficiency of industrial/conventional practices
- Level 2: Substitute industrial/conventional inputs and practices with organic agriculture
- Level 3: Re-design the agro-ecosystem towards integrated and resilient agroecosystems
- Level 4: Establish alternative forms of economic exchange and market relationships
- Level 5: Build a (new) global food system, that we will refer to as "building food sovereignty"

Food systems change to respond to health and climate crises.



Agroecology Transformative Partnership Platform

Assessing financial flows and investments | *Évaluation des flux financiers et des investissements*



THE AGROECOLOGY ASSESSMENT FRAMEWORK

The Agroecology Coalitions' Agroecology Finance Assessment Tool: A common framework for tracking investments for agroecology co-created by donors, civil society, farmer organizations, researchers, multilateral organizations...

L'outil d'évaluation du financement de l'agroécologie de l'Agroecology Coalitions : Un cadre commun pour le suivi des investissements en faveur de l'agroécologie, créé conjointement par les donateurs, la société civile, les organisations paysannes, les chercheurs, les organisations multilatérales...



Moeller, NI, et al. 2023. Measuring agroecology: Introducing a methodological framework and a community of practice approach. *Elem Sci Anth*, 11: 1. DOI: <https://doi.org/10.1525/elementa.2023.00042>



Agroecology Transformative Partnership Platform

Assessing agroecological integration in policies | *Évaluer l'intégration de l'agroécologie dans les politiques*

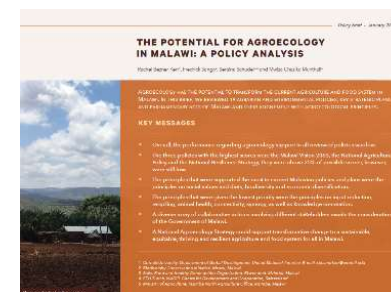


CFS Policy Recommendation	Priority Action	Country Status (relevant actions):	Target(s)*	Indicator(s)†	Who is responsible
1. Lay or strengthen, as appropriate, the policy foundations for agroecological approaches to contribute to sustainable agriculture and food systems that enhance food security and nutrition.	1.1 Promote the integration of agroecological approaches in policies and plans that address agriculture and food system challenges in the local context by strengthening the resilience of food systems.		TBC during national consultations	TBC during national consultations	
	<p>Measures creating perverse Incentives</p> <p>Measures that go beyond policy recommendation</p> <p>Civil Society perspective</p>				
	1.2 Strengthen public policies to harness market mechanisms to enable sustainable agriculture and food systems by considering economic, environmental, and social, including public health, externalities, trade-offs, and synergies.				

<https://gifs.globallandscapesforum.org/topics/21467/page/food-systems-transformation-through-agroecology>

The TPP's Tracking Tool for the Implementation of the CFS Policy Recommendations on Agroecology

L'outil de suivi du PPT pour la mise en œuvre des recommandations politiques du CSA sur l'agroécologie



Agroecology Transformative Partnership Platform

Assessing agroecological integration in enterprises | *Évaluer l'intégration agroécologique dans les entreprises*



Business Agroecology Criteria Tool
biovision

User guide

The Business Agroecology Criteria Tool (B-ACT) is designed to assess the degree to which enterprises are aligned with each of the 13 principles of agroecology, as established by the High Level Panel of Experts on Food Security and Nutrition¹.

What is the tool for?

The Business Agroecology Criteria Tool (B-ACT) assesses an enterprise's general alignment with the three pillars of sustainable food systems (see Figure 1). The B-ACT also contains screening questions to rapidly determine whether an enterprise's business model, operations or strategy are potentially in conflict with agroecology. The user can expect to spend 2-3 hours to complete the B-ACT assessment. For users wanting to conduct a preliminary screening, especially when dealing with a larger pool of enterprises, we recommend first using [Biovision's Agroecology Check for Enterprises](#).

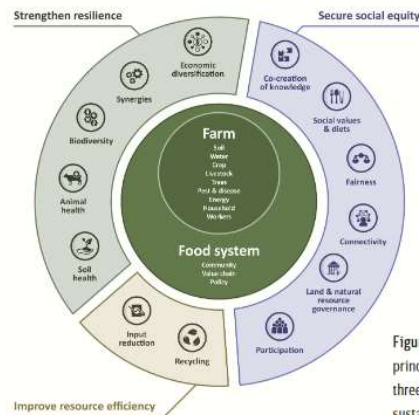
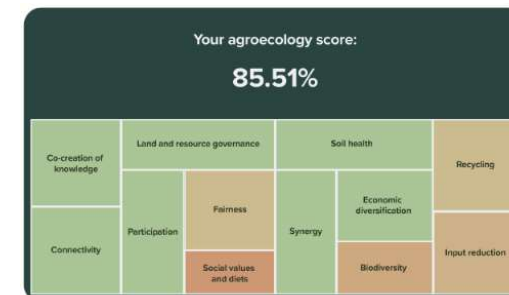


Figure 1: Overview of 13 principles of agroecology and three operational principles of sustainable food systems

The global food system currently accounts for 1/3 of anthropogenic greenhouse gas emissions² and is the primary driver of biodiversity loss³. In this context, the B-ACT fills the need for a diagnostic tool that takes into account the environmental and social impacts of enterprises in food systems. The tool allows for identification of enterprises demonstrating sustainable practices and potential to drive the sustainable transformation of food systems.

Biovision's Business Agroecology Criteria Tool (B-ACT): A quick yet systematic approach to assess alignment with agroecology principles

L'outil Business Agroecology Criteria Tool (B-ACT) de Biovision : Une approche rapide mais systématique pour évaluer l'alignement sur les principes de l'agroécologie




<https://www.agroecology-pool.org/b-act/>



Agroecology Transformative Partnership Platform

Assessing agroecological integration in farms | *Évaluer l'intégration agroécologique dans les exploitations agricoles*



FARM-LEVEL AGROECOLOGY CRITERIA TOOL USER GUIDE

The Farm Level Agroecology Criteria Tool (F-ACT) is a digital decision-making tool that enables farmers to identify ways for making their farms more efficient, resilient, equitable, and ultimately agroecological. This document highlights the utility and limitations of F-ACT and provides guidance for using F-ACT.

- Monitor adoption of agroecological practices or behaviours after training.
- Produce narrative case studies to promote agroecological farming and food systems within communities and as a tool for advocacy and policy.



Biovision's Farm Level Agroecology Criteria Tool (F-ACT):
Great approach for engaging farmers on agroecology and provide evidence-based inspiration – does not assess performance

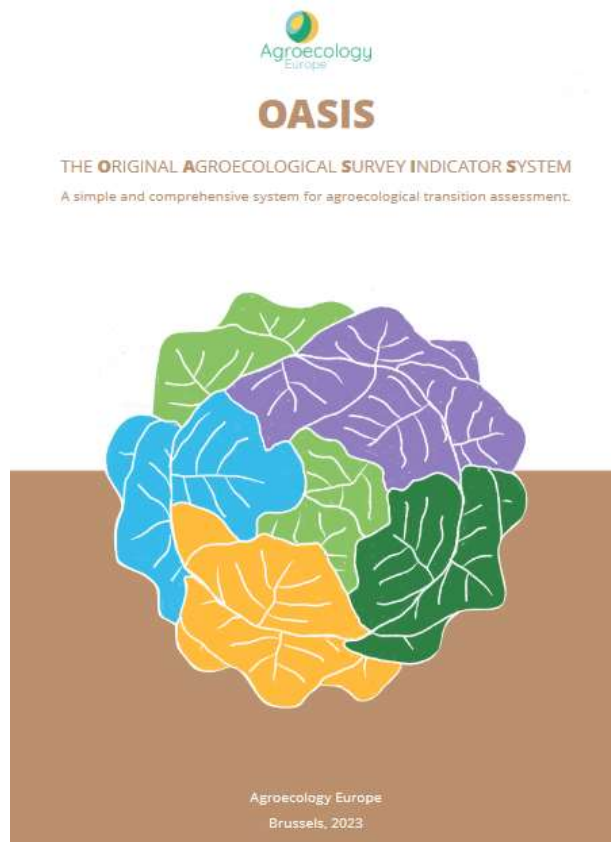
L'outil de critères d'agroécologie au niveau de l'exploitation de Biovision (F-ACT) : Excellente approche pour impliquer les agriculteurs dans l'agroécologie et fournir une inspiration basée sur des preuves - n'évalue pas la performance

<https://www.agroecology-pool.org/fact/>



Agroecology Transformative Partnership Platform

Assessing agroecological integration in farms | *Évaluer l'intégration agroécologique dans les exploitations agricoles*



DESCRIPTION OF THE FRAMEWORK

Steps

DIMENSION 1 - Farming practices

DIMENSION 2 - Economic viability

DIMENSION 3 - Socio-political aspects

DIMENSION 4 - Environment and biodiversity

DIMENSION 5 - Resilience

PARTICIPATORY INTERPRETATION OF RESULTS

Agroecology Europe's Original Agroecological Survey and Indicator System (OASIS): Designed to support farmers in their transitions to agroecology – combines assessment of 'agroecologicalness' and performance

SNO

Le système original d'enquête et d'indicateurs agroécologiques (OASIS) d'Agroecology Europe : Conçu pour soutenir les agriculteurs dans leur transition vers l'agroécologie - combine l'évaluation de l'« agroécologie » et de la performance

<https://www.agroecology-europe.org/oasis-brochure/>



Implemented by

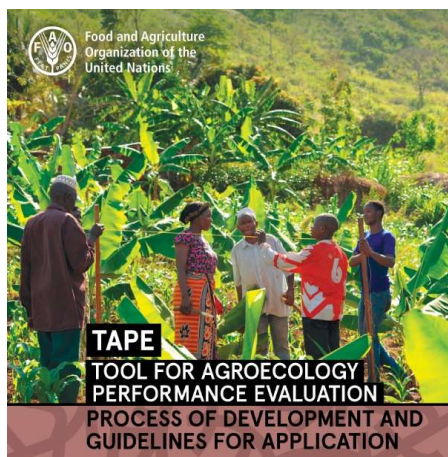


Agroecology Transformative Partnership Platform

Slide 20

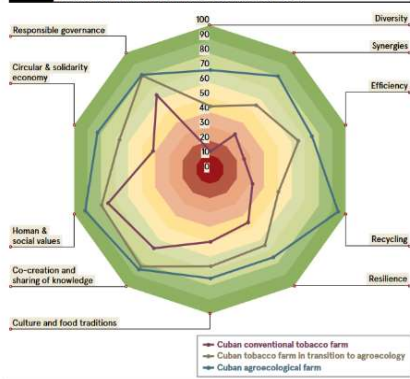
SNO Translator tool didn't capture this - maybe Grace will know?
Noelting, Steffi EXT 0B60, 2024-09-04T10:58:21.605

Assessing agroecological integration in farms | *Évaluer l'intégration agroécologique dans les exploitations agricoles*



FAO's Tool for Agroecology Performance Evaluation (TAPE): The most widely used tool for assessing agroecology and its performance. Step 1 is the Characterization of Agroecological Transition (CAET)

FIGURE 3 Visualization of the results of the CAET for three farms in Western Cuba at different stages of agroecological transition: monoculture in conventional production, recent transition, and advanced transition. (Lucantoni et al., 2018).



L'outil d'évaluation des performances de l'agroécologie (TAPE) de la FAO : L'outil le plus largement utilisé pour évaluer l'agroécologie et ses performances. L'étape 1 est la caractérisation de la transition agroécologique (CAET).

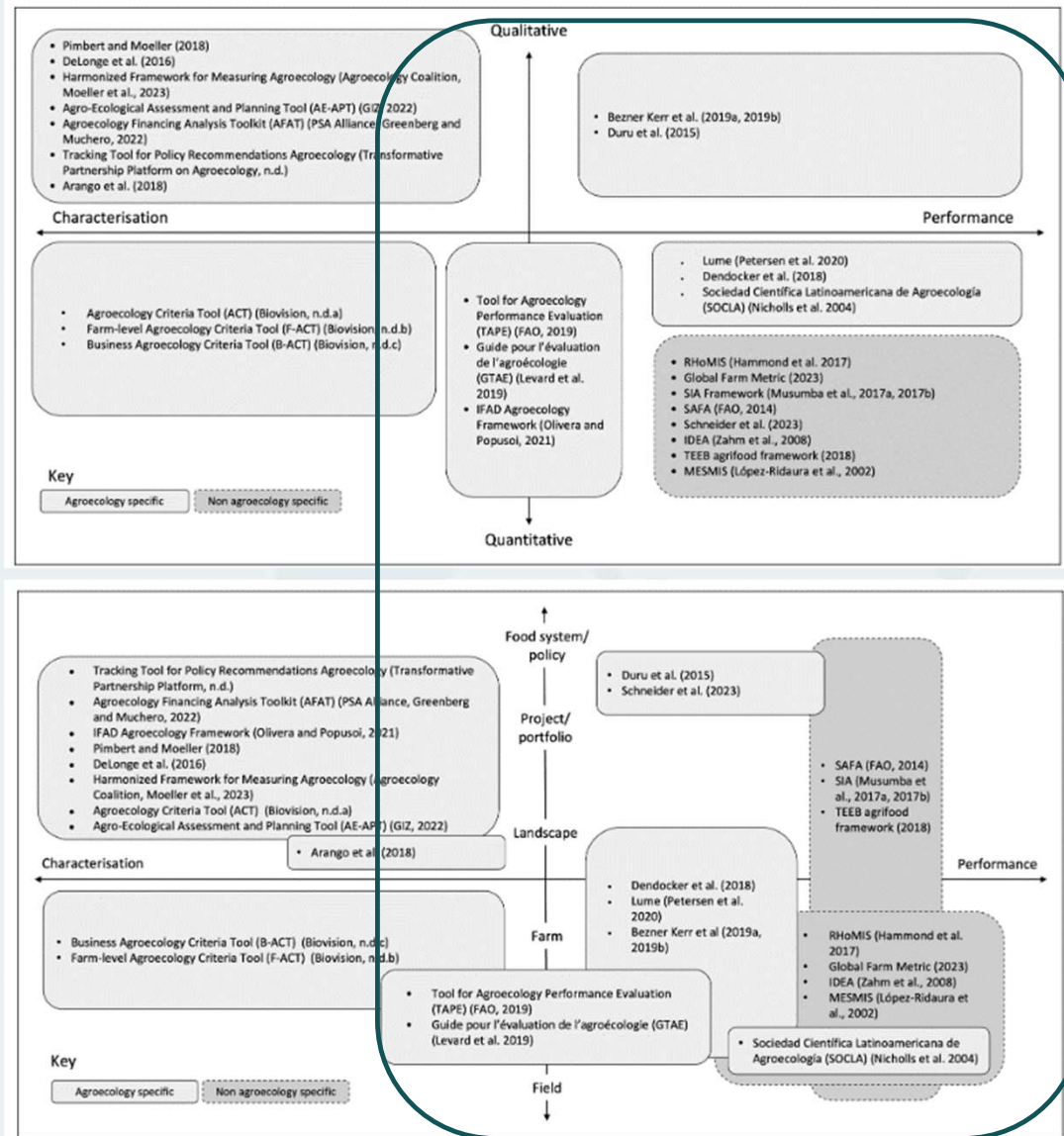
<https://www.fao.org/agroecology/tools-tape/en/>



Agroecology Transformative Partnership Platform

Assessing the **performance** of agroecology: Status of agroecology's contribution to achieving societal goals at different levels

*Évaluation des **performances** de l'agroécologie : État de la contribution de l'agroécologie à la réalisation des objectifs sociétaux à différents niveaux*



Assessing performance of farms | *Évaluation des performances des exploitations agricoles*

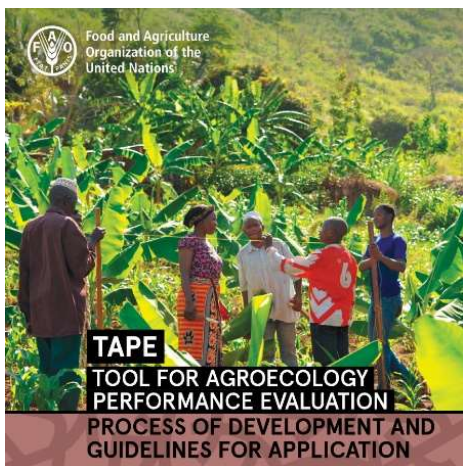


TABLE 4 10 Core criteria of performance of agroecology and their links to SDG indicators

MAIN DIMENSION	#	CORE CRITERIA OF PERFORMANCE	PROPOSED METHOD OF ASSESSMENT IN SURVEY	SDG	SDG INDICATORS
Governance	1	Secure land tenure (or mobility for pastoralists)	Type of tenure over land: property, lease + duration, verbal, not explicit (SDG 1.4.2, 5.a.1 and 2.4.1 sub-indicator 11) Existence and use of pastoral agreements and mobility corridors	1	14.2
				2	2.4.1
				5	5.a.1
Economy	2	Productivity	Farm output value per hectare (SDG 2.4.1 sub-indicator 1) Farm output value per person	2	2.3.1 2.4.1
				3	Income
	4	Added value	Net income +rents +taxes +interests - subsidies	10	10.1.1 10.2.1
Health & nutrition	5	Exposure to pesticides	Quantity applied, area, toxicity and existence of risk mitigation equipment and practices	3	3.9.1 3.9.2 3.9.3
	6	Dietary diversity	Minimum Dietary Diversity for Women (FAO and FHI 360, 2016)	2	2.1.1 2.1.2 2.2.1 2.2.2 2.4.1
Society & Culture	7	Women's empowerment	Abbreviated Women's Empowerment in Agriculture Index, A-WEAI (IFPRI, 2012)	2 5	2.4.1 5.a.1 5.a.2
	8	Youth employment opportunity	Access to jobs, training, education or migration (SDG 8.6.1)	8	8.6.1
Environment	9	Agricultural biodiversity	Relative importance of crops varieties, livestock breeds, trees and semi-natural environments on farm (SDG 2.4.1 sub-indicator 8.1, 8.6 and 8.7)	2	2.4.1
				15	2.5.1
	10	Soil health	Adapted SOCLA rapid and farmer friendly agroecological method to assess soil health (Nicholls et al., 2004)	2 15	2.4.1 15.3.1

FAO's Tool for Agroecology Performance Evaluation (TAPE): The most widely used tool for assessing agroecology and its performance. Step 2 assesses performance aligned with SDGs

L'outil d'évaluation des performances de l'agroécologie (TAPE) de la FAO : L'outil le plus largement utilisé pour évaluer l'agroécologie et ses performances. L'étape 2 évalue la performance alignée sur les ODD.

<https://www.fao.org/agroecology/tools-tape/en/>

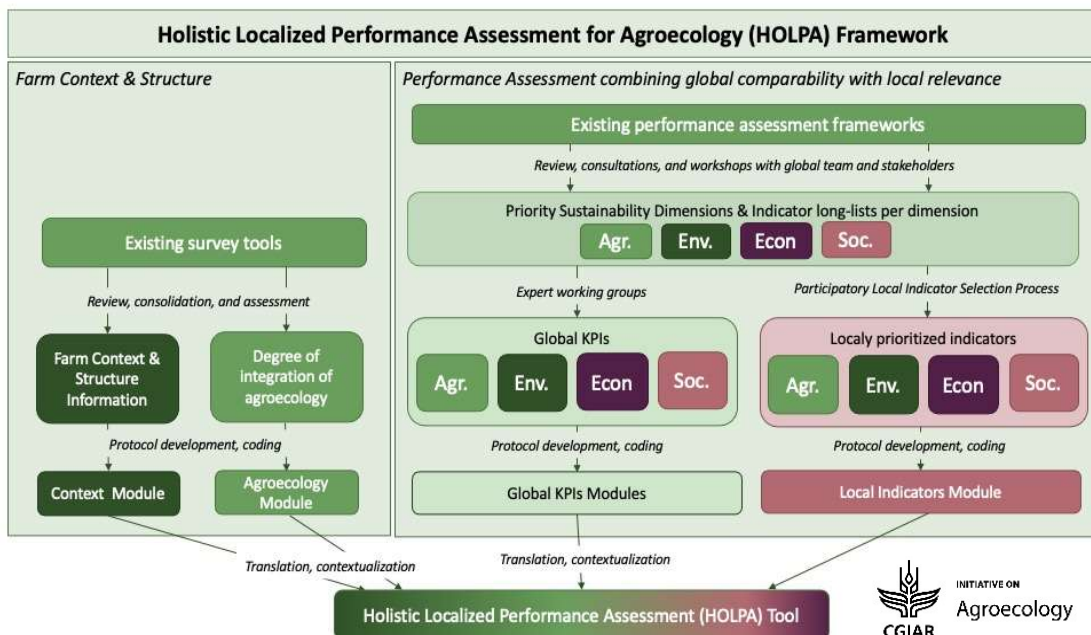


Implemented by



Agroecology Transformative Partnership Platform

Assessing performance of farms | *Évaluation des performances des exploitations agricoles*



CGIAR's Holistic Localized Performance Assessment for Agroecology (HOLPA) assesses a farm's performance in 4 dimensions, combines local and global indicators, and correlates performance with agroecological integration

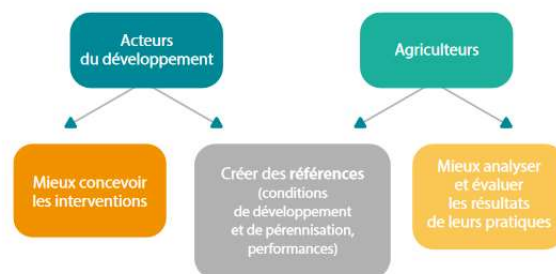
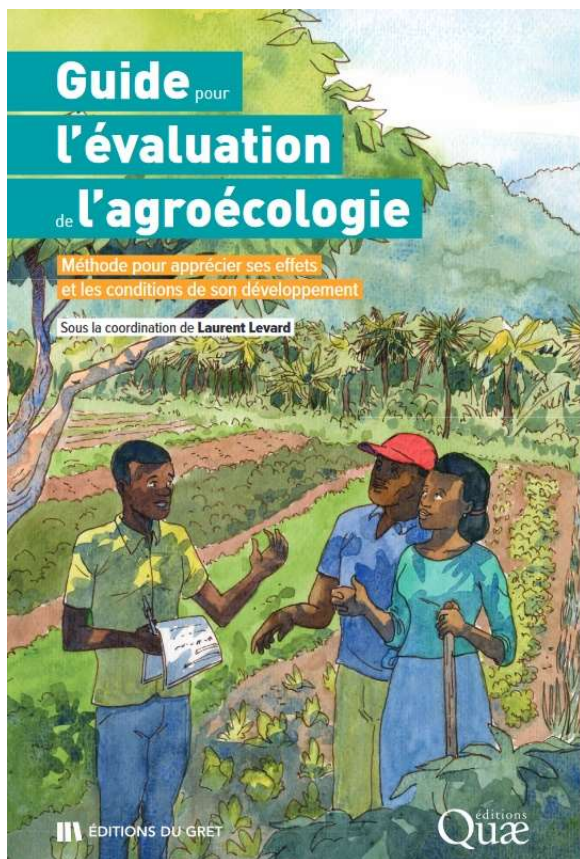
L'évaluation holistique des performances localisées pour l'agroécologie (HOLPA) du CGIAR évalue les performances d'une exploitation agricole en 4 dimensions, combine des indicateurs locaux et globaux et établit une corrélation entre les performances et l'intégration agroécologique.

https://papers.ssrn.com/sol3/papers.cfm?abstract_id=4891979



Agroecology Transformative Partnership Platform

Assessing performance of farms | *Évaluation des performances des exploitations agricoles*



Groupe de travail sur les transitions agroécologiques (GTAE)'s *Guide pour l'évaluation de l'agroécologie* allows for assessing the effects of practicing agroecology and analyses the factors that support or hinder agroecological transitions

Le Guide pour l'évaluation de l'agroécologie du Groupe de travail sur les transitions agroécologiques (GTAE) permet d'évaluer les effets de la pratique de l'agroécologie et d'analyser les facteurs qui favorisent ou entravent les transitions agroécologiques.

<https://gret.org/publication/guide-pour-levaluation-de-lagroecologie/>



Agroecology TPP



german
cooperation
DEUTSCHE ZUSAMMENARBEIT



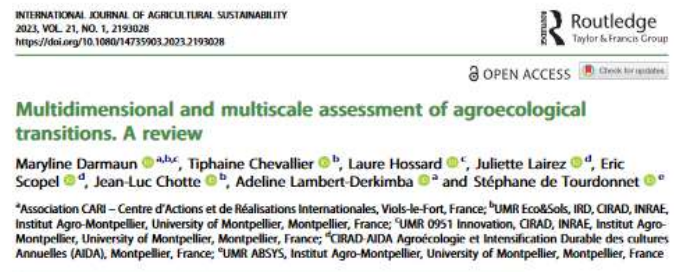
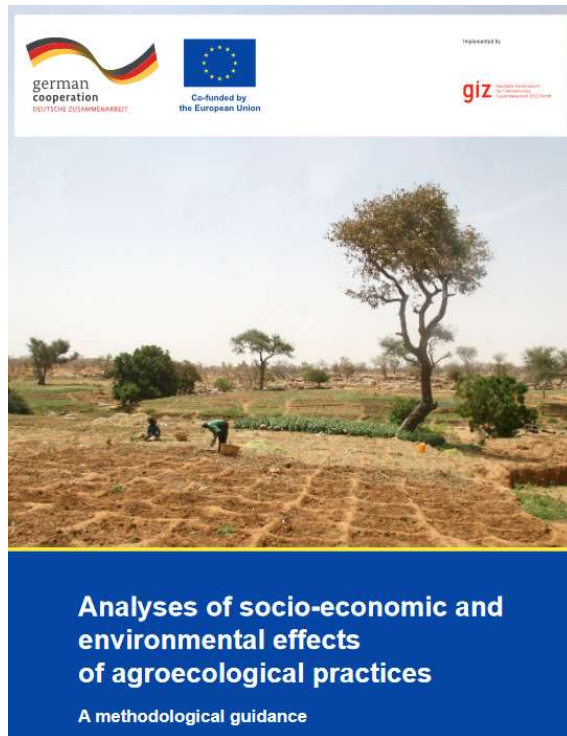
Co-funded by
the European Union

Implemented by

giz Deutsche Gesellschaft
für Internationale
Zusammenarbeit (GIZ) GmbH

Agroecology Transformative Partnership Platform

Assessing agroecological performance | *Évaluer les performances agroécologiques*



<https://www.giz.de/en/downloads/giz2023-en-measuring-socio-economic-effects-of-agroecology.pdf>

<https://www.tandfonline.com/doi/full/10.1080/14735903.2023.2193028>

<https://journals.sagepub.com/doi/abs/10.1177/00307270231196309?journalCode=oaga>



Agroecology Transformative Partnership Platform

What does 'Measuring Agroecology' mean? *Que signifie « mesurer l'agroécologie » ?*

Three general ways of looking at the topic:

1. Assessing the degree of agroecological **integration**: Status of integration of 13 principles or 10 elements
2. Assessing the **performance** of agroecology: Status of agroecology's contribution to achieving societal goals
3. Assessing agroecological **transitions**: Tracking of changes in a system and its components over time

Trois façons générales d'aborder le sujet :

1. évaluer le degré d'intégration agroécologique : état de **l'intégration** des 13 principes ou des 10 éléments
2. évaluer la **performance** de l'agroécologie : état de la contribution de l'agroécologie à la réalisation des objectifs sociétaux
3. l'évaluation des **transitions** agroécologiques : Suivi de l'évolution d'un système et de ses composantes au fil du temps



Tracking agroecological transitions | *Suivi des transitions agroécologiques*

1. No ready-made tools or frameworks
2. Can be partially achieved by repeated applications of tools for assessing agroecological **integration** and **performance** over a prolonged time period to see how the status of the system changes over time
3. Need to additionally assess the transition **process** itself rather than just the change in status
4. Important to assess changes in actors' **knowledge, attitudes and behavior**

1. Pas d'outils ou de cadres prêts à l'emploi
2. Peut être partiellement atteint par l'application répétée d'outils d'évaluation de **l'intégration** et des **performances** agroécologiques sur une période prolongée afin de voir comment l'état du système évolue au fil du temps
3. Nécessité d'évaluer en outre le **processus** de transition lui-même plutôt que le seul changement de statut
4. Il est important d'évaluer les changements dans **les connaissances, les attitudes et les comportements des acteurs**



Agroecology TPP



german
cooperation
DEUTSCHE ZUSAMMENARBEIT



Co-funded by
the European Union

Implemented by

giz Deutsche Gesellschaft
für Internationale
Zusammenarbeit (GIZ) GmbH

Agroecology Transformative Partnership Platform

No silver bullets for measuring agroecology | *Pas de solution miracle pour mesurer l'agroécologie*

Agroecology...

- ... is a **holistic** systems approach that operates and creates benefits on multiple scales
- ... emphasizes **context-specificity** and the importance of local and traditional knowledge
- ... values **co-creation** and the integration of different perspectives

L'agroécologie...

- ... est une approche holistique des systèmes qui fonctionne et crée des avantages à de multiples échelles
- ... met l'accent sur la spécificité du contexte et l'importance des connaissances locales et traditionnelles
- ... valorise la co-création et l'intégration de différentes perspectives



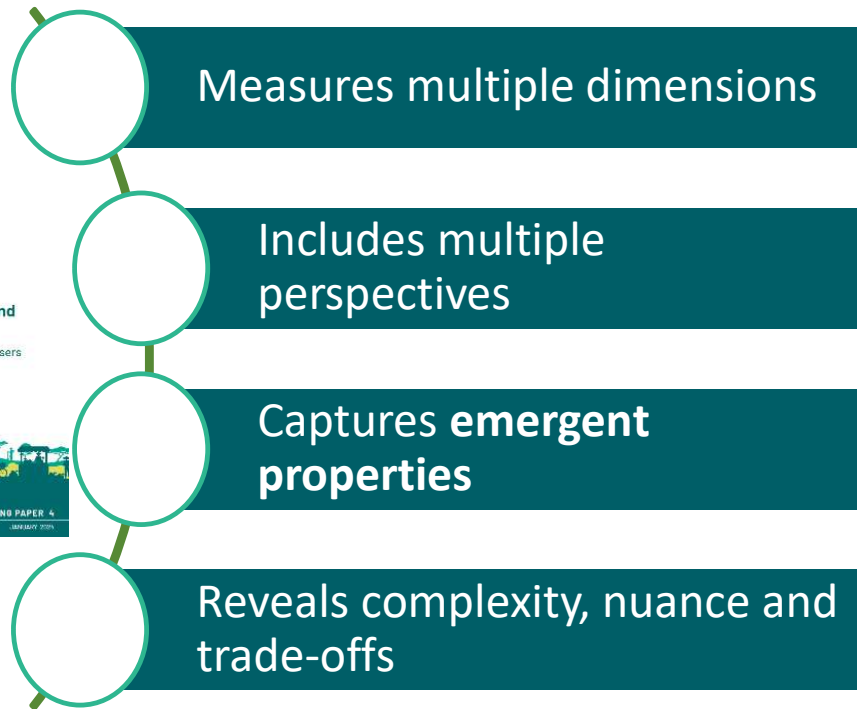
Implemented by



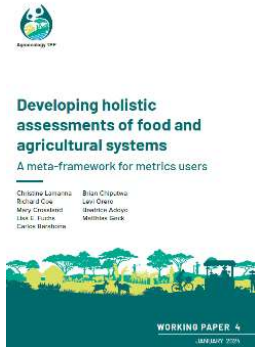
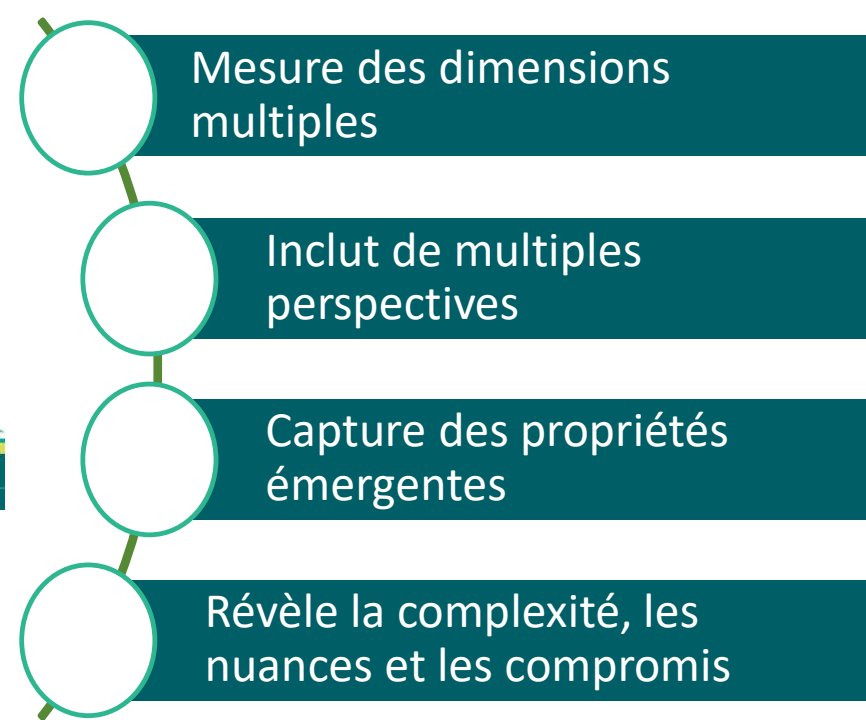
Agroecology Transformative Partnership Platform

No silver bullets for measuring agroecology | *Pas de solution miracle pour mesurer l'agroécologie*

Key ingredients for holistic assessments



Les ingrédients clés d'une évaluation holistique



Developing your assessment in 10 steps | *L'élaboration de l'évaluation en 10 étapes*

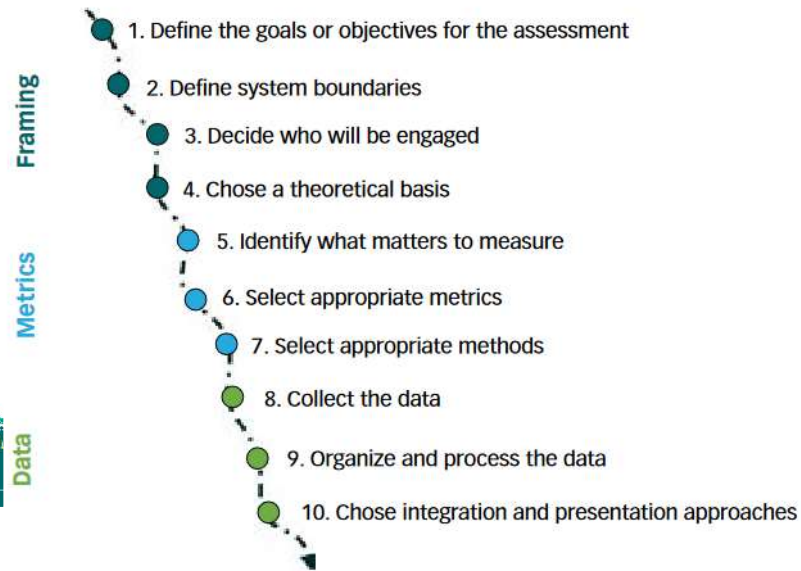


Figure 5. The ten steps for designing a holistic assessment system

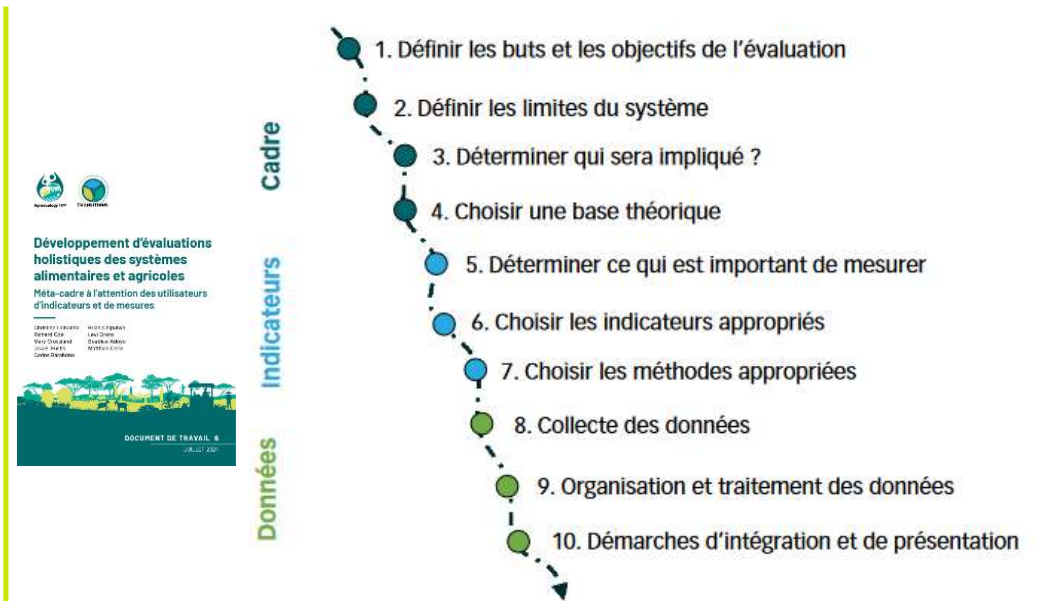


Figure 5. Les dix étapes de conception d'un système d'évaluation holistique



https://www.cifor-icraf.org/knowledge/publication/9081/?utm_source=site-search&utm_medium=cifor-icraf-website&utm_campaign=traffic-source



Measuring what matters to you | *Mesurer ce qui compte pour vous*

The TRANSITIONS Metrics project offers:

- A comprehensive **review** of over 10'000 metrics for agri-food systems
- A **database** of metrics for diverse dimensions, scales and objectives
- A **framework that guides** diverse metrics users through the journey of identifying or designing the right approach for their purposes
- **Support** to metrics users through workshops and guidance material

Le projet TRANSITIONS Metrics offre

- un **examen** complet de plus de 10 000 paramètres pour les systèmes agroalimentaires
- une **base de données** d'indicateurs pour diverses dimensions, échelles et objectifs
- Un **cadre qui guide** les différents utilisateurs de mesures dans l'identification ou la conception de la bonne approche pour leurs objectifs
- Un **soutien** aux utilisateurs d'indicateurs par le biais d'ateliers et de documents d'orientation.

<https://glfx.globallandscapesforum.org/topics/21467/page/metrics-to-support-agroecological-transitions>



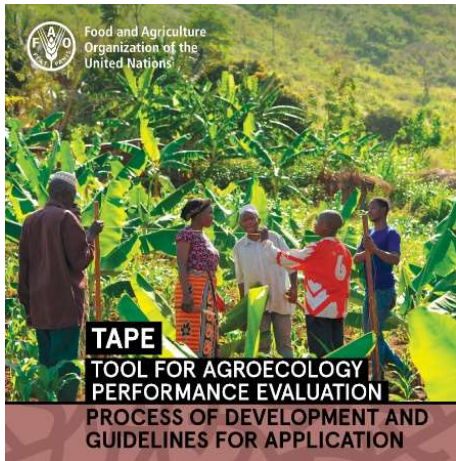
Stats4SD



Investing in rural people



Overcoming barriers through evidence | *Surmonter les obstacles grâce à des preuves*



Evidence on the multi-dimensional performance of agroecology critical for scaling transitions, as there is widespread skepticism regarding its productivity and profitability.

TAPE applied on 839 farms in Benin, Ethiopia, Kenya and Madagascar in the context of ProSoil/ProSilience.



Les preuves de la performance multidimensionnelle de l'agroécologie sont essentielles pour la mise à l'échelle des transitions, car la productivité et la rentabilité de l'agroécologie suscitent un scepticisme généralisé.

TAPE a été appliqué à 839 exploitations agricoles au Bénin, en Éthiopie, au Kenya et à Madagascar dans le cadre de ProSoil/ProSilience.

<https://gix.globallandscapesforum.org/topics/21467/page/measuring-agroecology-and-its-performance>



Agroecology Transformative Partnership Platform

Overcoming barriers through evidence | *Surmonter les obstacles grâce à des preuves*



TAPE Step 1 CAET: How agroecological are the assessed farms?

- Project activities significantly fostered agroecological transitions across all ten elements of agroecology
- Allows for correlating 'agroecologicalness' with performance

TAPE Étape 1 CAET : Dans quelle mesure les exploitations évaluées sont-elles agroécologiques ?

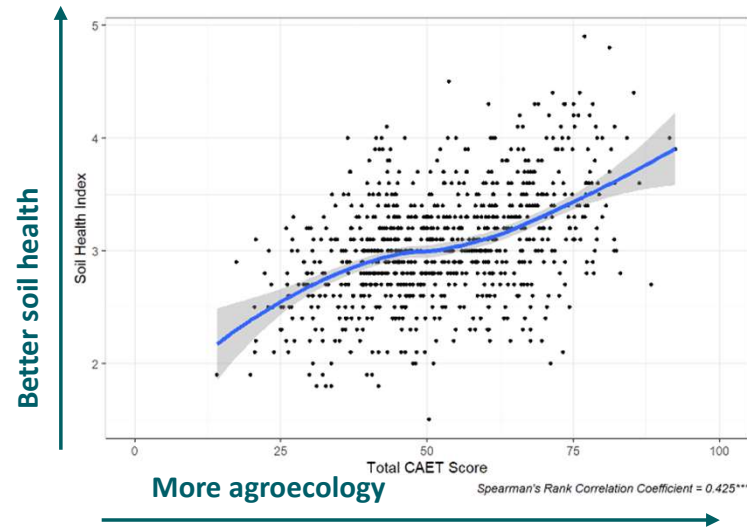
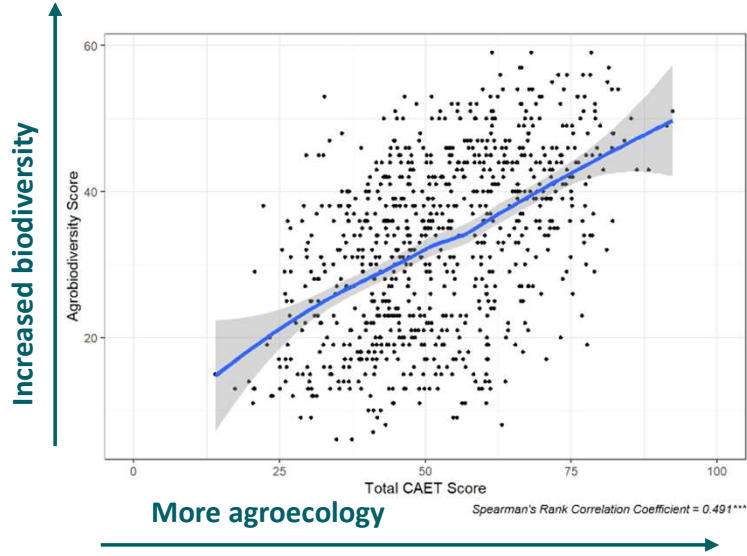
- Les activités du projet ont favorisé de manière significative les transitions agroécologiques sur l'ensemble des dix éléments de l'agroécologie.
- Permet d'établir une corrélation entre l'« agroécologie » et les performances

Slide 34

SNO Translation tool didn't quite pick up on agriecologicalness, I thinki
Noelting, Steffi EXT 0B60, 2024-09-04T13:50:31.205

CEO 0 Looks ok to me I think!
Colbert , Edd, 2024-09-06T14:26:12.393

Overcoming barriers through evidence | *Surmonter les obstacles grâce à des preuves*



Practicing agroecology results in improved environmental performance of farms

La pratique de l'agroécologie améliore les performances environnementales des exploitations agricoles



Agroecology TPP



german cooperation
DEUTSCHE ZUSAMMENARBEIT



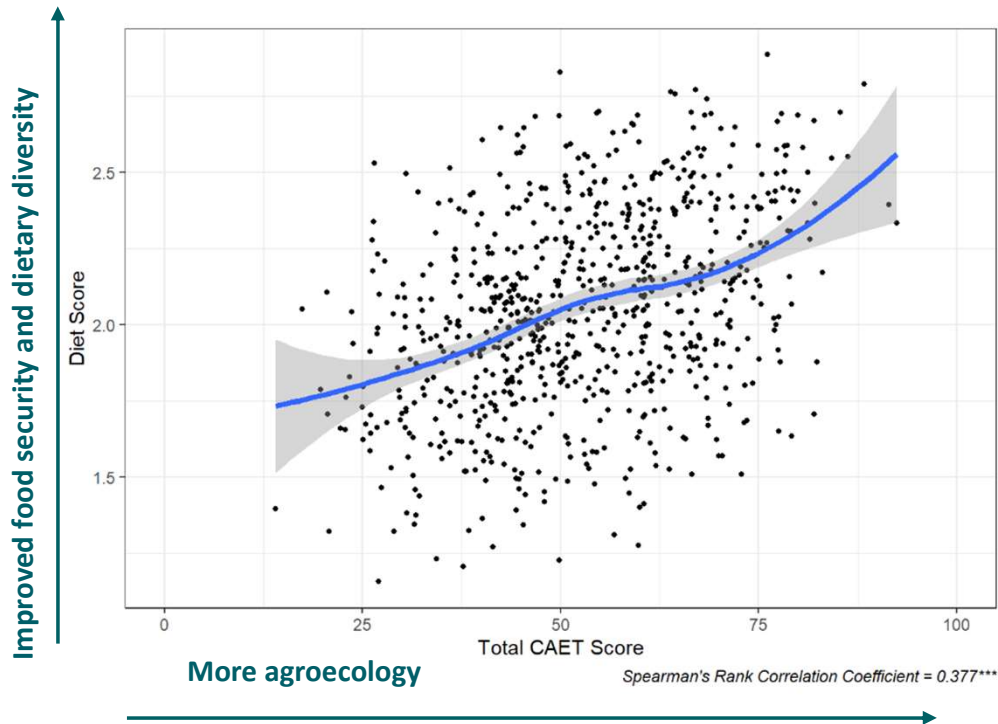
Co-funded by
the European Union

Implemented by

giz Deutsche Gesellschaft für Internationale Zusammenarbeit (GIZ) GmbH

Agroecology Transformative Partnership Platform

Overcoming barriers through evidence | *Surmonter les obstacles grâce à des preuves*



Practicing agroecology results in improved food security and dietary diversity

La pratique de l'agroécologie permet d'améliorer la sécurité alimentaire et la diversité du régime alimentaire

What are the benefits of agroecology? | *Quels sont les avantages de l'agroécologie ?*

Please use the chat or raise your hand to let us know:

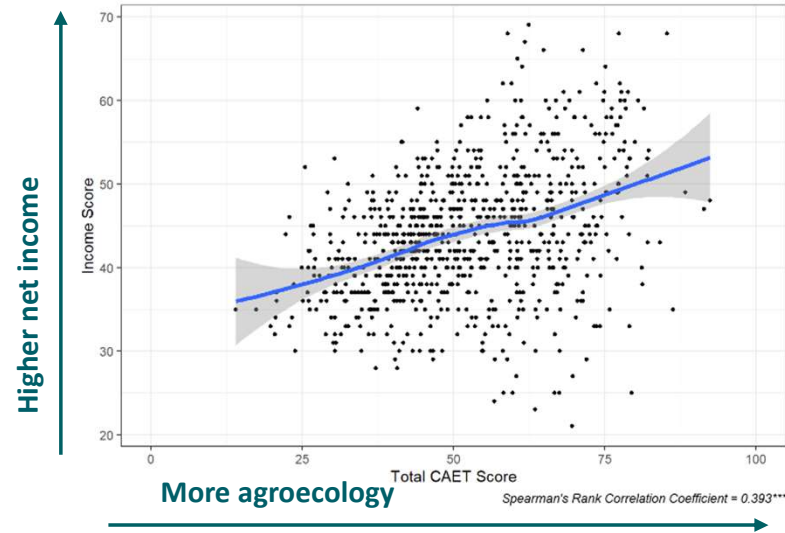
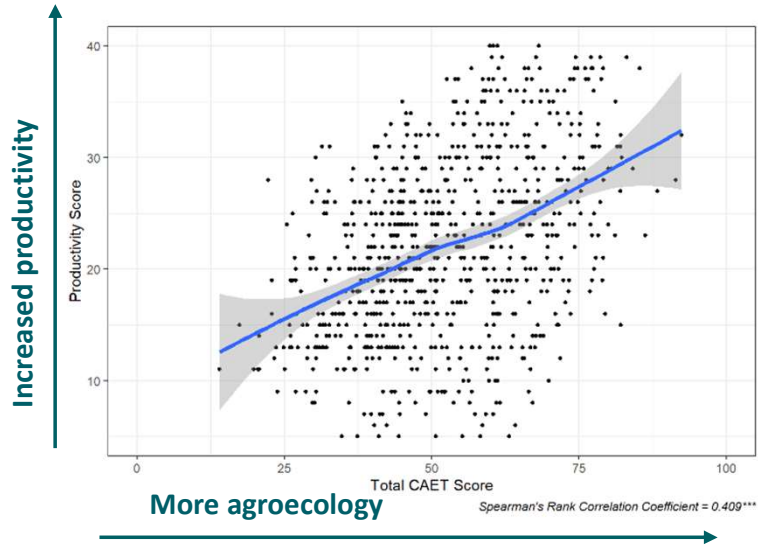
What do you think the TAPE results will tell us regarding the economic performance of agroecology? Will **productivity** and **income** be lower or higher in more agroecological farms?

Veillez utiliser le chat ou lever la main pour nous en faire part :

Selon vous, que nous apprendront les résultats de TAPE sur les performances économiques de l'agroécologie ? La **productivité** et les **revenus** seront-ils plus faibles ou plus élevés dans les exploitations plus agroécologiques ?



Overcoming barriers through evidence | *Surmonter les obstacles grâce à des preuves*



Practicing agroecology results in increased productivity of farms and higher net income for households

La pratique de l'agroécologie se traduit par une augmentation de la productivité des exploitations agricoles et du revenu net des ménages.



Agroecology TPP

bit.ly/AgEc_TPP

Thank you! Merci beaucoup!

Please reach out at any moment for engaging further on assessing agroecology and agri-food systems holistically:

m.geck@cifor-icraf.org

N'hésitez pas à nous contacter pour en savoir plus sur l'évaluation holistique de l'agroécologie et des systèmes agroalimentaires :

m.geck@cifor-icraf.org



Implemented by

giz Deutsche Gesellschaft für Internationale Zusammenarbeit (GIZ) GmbH



Investing in rural people



Stats4SD



Food and Agriculture Organization of the United Nations



The Agroecology Leadership Academy is conducted with financial support from the European Union (EU) as part of the EU co-funded programme “ProSilience: Enhancing soils and agroecology for resilient agri-food systems in Sub-Saharan Africa”. ProSilience is integrated into the global programme “Soil Protection and Rehabilitation for Food Security (ProSoil)” commissioned by the German Federal Ministry for Economic Cooperation and Development (BMZ) and implemented by the Deutsche Gesellschaft für Internationale Zusammenarbeit (GIZ) GmbH.

Responsible

Global Programme

Soil protection and rehabilitation for food security

Head of Programme: Anneke Trux

Deutsche Gesellschaft für
Internationale Zusammenarbeit (GIZ) GmbH

Friedrich-Ebert-Allee 32 + 36

53113 Bonn, Germany

E soilprotection@giz.de

T +49 (0) 228 44 60 - 0

F +49 (0) 228 44 60 – 17 66

giz.de/en